



Welcome To A Home That Not Just Offers You A World Of Comfort And Convenience, But Is A Definitive Upgrade To Your Lifestyle. An Integrated Green Sustainable Residence Which Is Futuristic In Its Outlooks And Yet Retains The True Essence Of Veluk.

Luxury Now Is About Having A Space That Inspires You. It's About Having Time For The Finer Things In Life. For Instance, In Today's Hectic World It Would Be A Luxury To Simply Stand By The Balcony And Listen To A Birdsong.

57 HOMES Is All About This New Luxury And Much More. It Is All Set To Take The Meaning Of Luxury A Notch Above The Rest, With Extremely High Quality Construction Standard And A Professional Approach.

Nestled In An Oasis Of Serenity And Picturesque Greens, **57 HOMES** Is An Ode To Those Who Appreciate The Beauty Of Understated Elegance, And Never Settle For Anything Less Than The Best.





Home is where the best experiences take birth and grow. It's where you nurture priceless memories and treasure it for lifetime. With time it grows in to a beautiful place where you can live share and find happiness in ways never dreamt of. Home is where your heart is.

Sri Ratnananda Developers presents **57 Homes** with luxurious row house homes to fulfil your dreams.

57 Homes is Located in **Veluk** in a peaceful green environment and in close proximity to schools, open grounds, temples and major roads. You can truly call

it your Abode of Peace.





M O R D E N F A C I L I T I E S



ENTRANCE GATE



SWIMMING POOL



LANDSCAPED GARDEN



SENIOR CITIZEN SITTING



CCTV CAMERA



BANQUET HALL



INDOOR GAMES



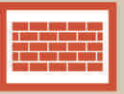
CHILDREN PLAY AREA



CAFETERIA SPACE



MULTI MEDIA ROOM



COMPOUND WALL



CC - PAVER ROAD

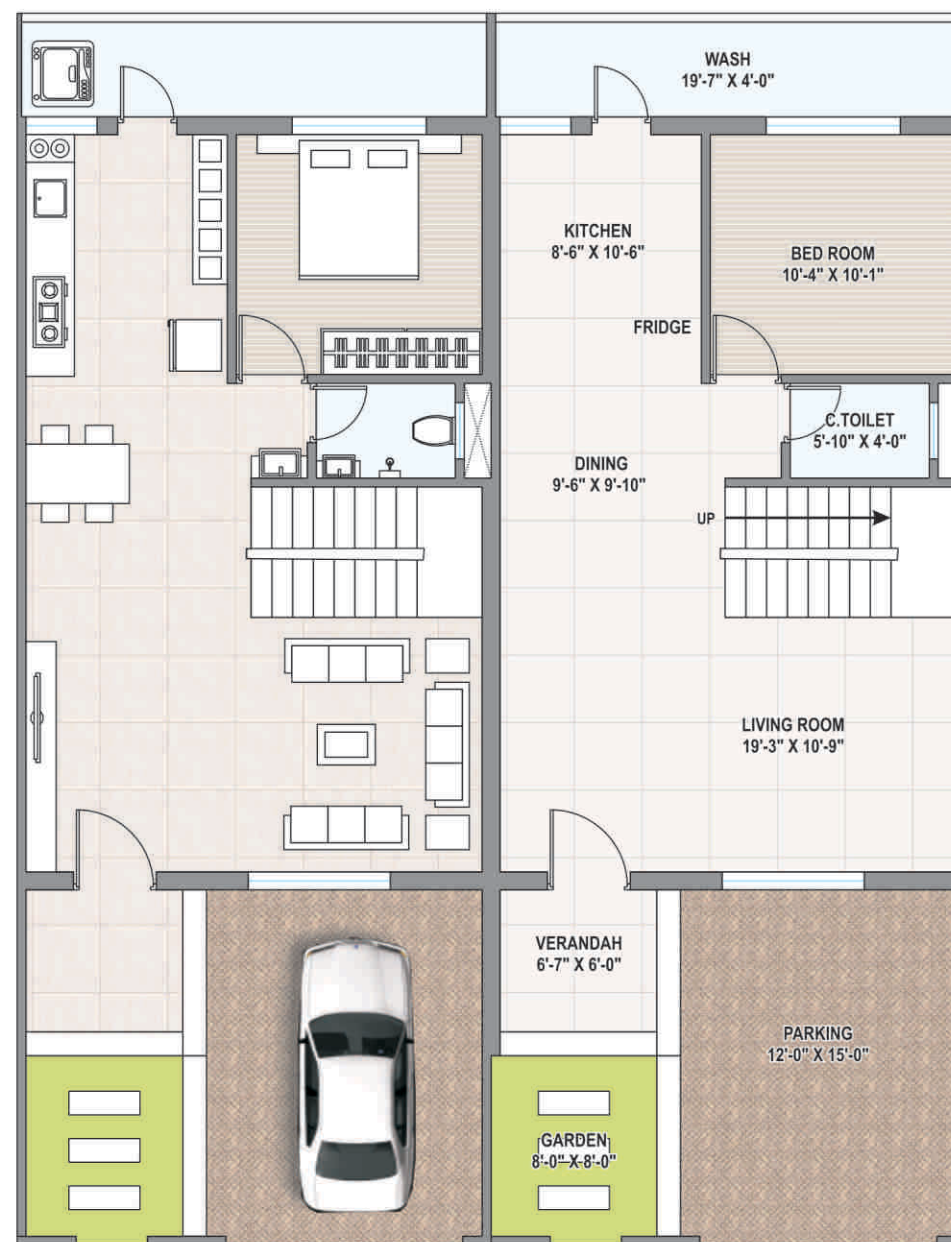


Layout Plan 

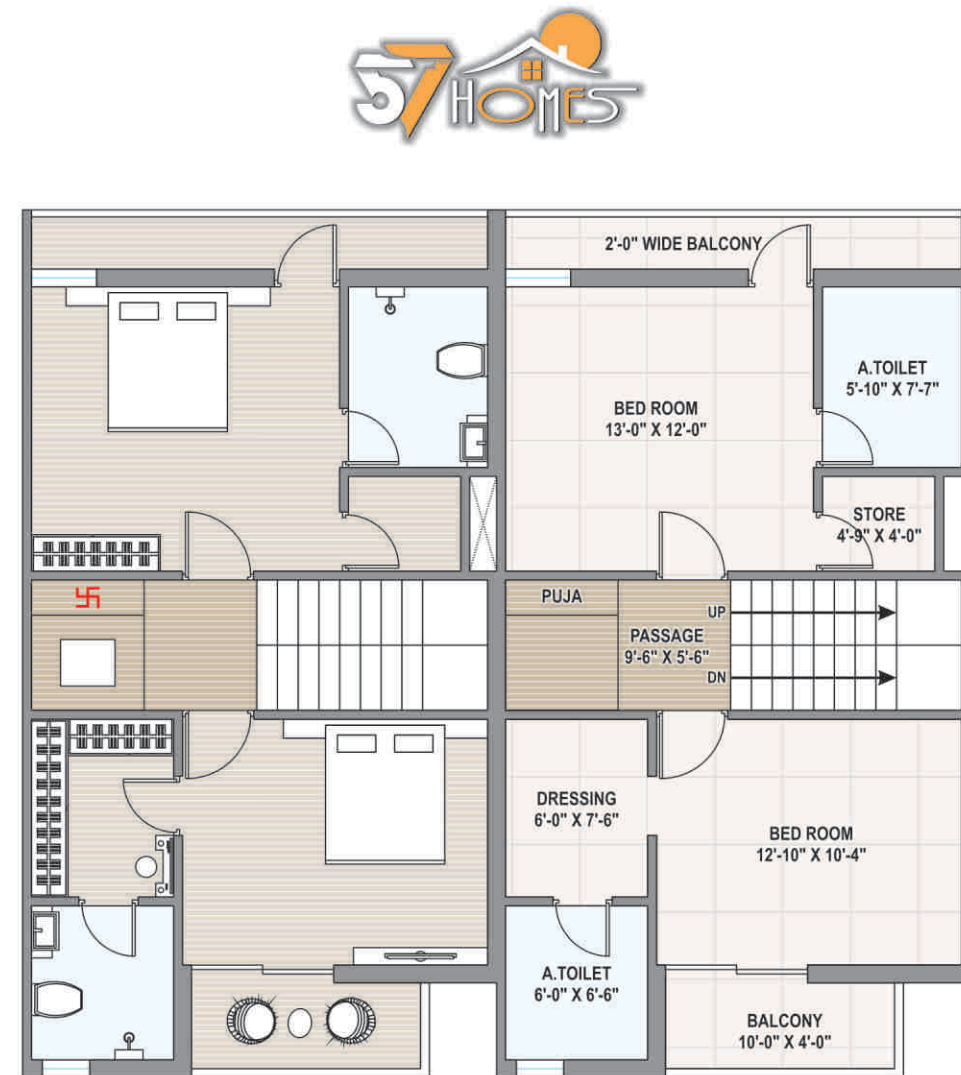


PLOT NO.	PLOT AREA (IN SQ. YD.)
1	126.38
2	119.09
3	119.09
4	119.09
5	119.09
6	119.09
7	119.39
8	122.87
9	149.71
10	115.44
11	115.44
12	115.44
13	115.44
14	115.44
15	115.44
16	110.24
17	96.48
18	94.84
19	108.96
20	138.90
21	110.24
22	115.44
23	115.44
24	115.44
25	115.44
26	115.44
27	115.44
28	139.49
29	149.74

PLOT NO.	PLOT AREA (IN SQ. YD.)
30	119.09
31	119.09
32	119.09
33	119.09
34	119.09
35	119.09
36	126.38
37	154.25
38	125.29
39	124.53
40	123.76
41	123.03
42	122.27
43	121.50
44	120.78
45	120.01
46	119.24
47	118.52
48	157.17
49	107.90
50	88.42
51	86.75
52	85.08
53	83.39
54	81.72
55	80.04
56	78.36
57	85.09



Ground Floor



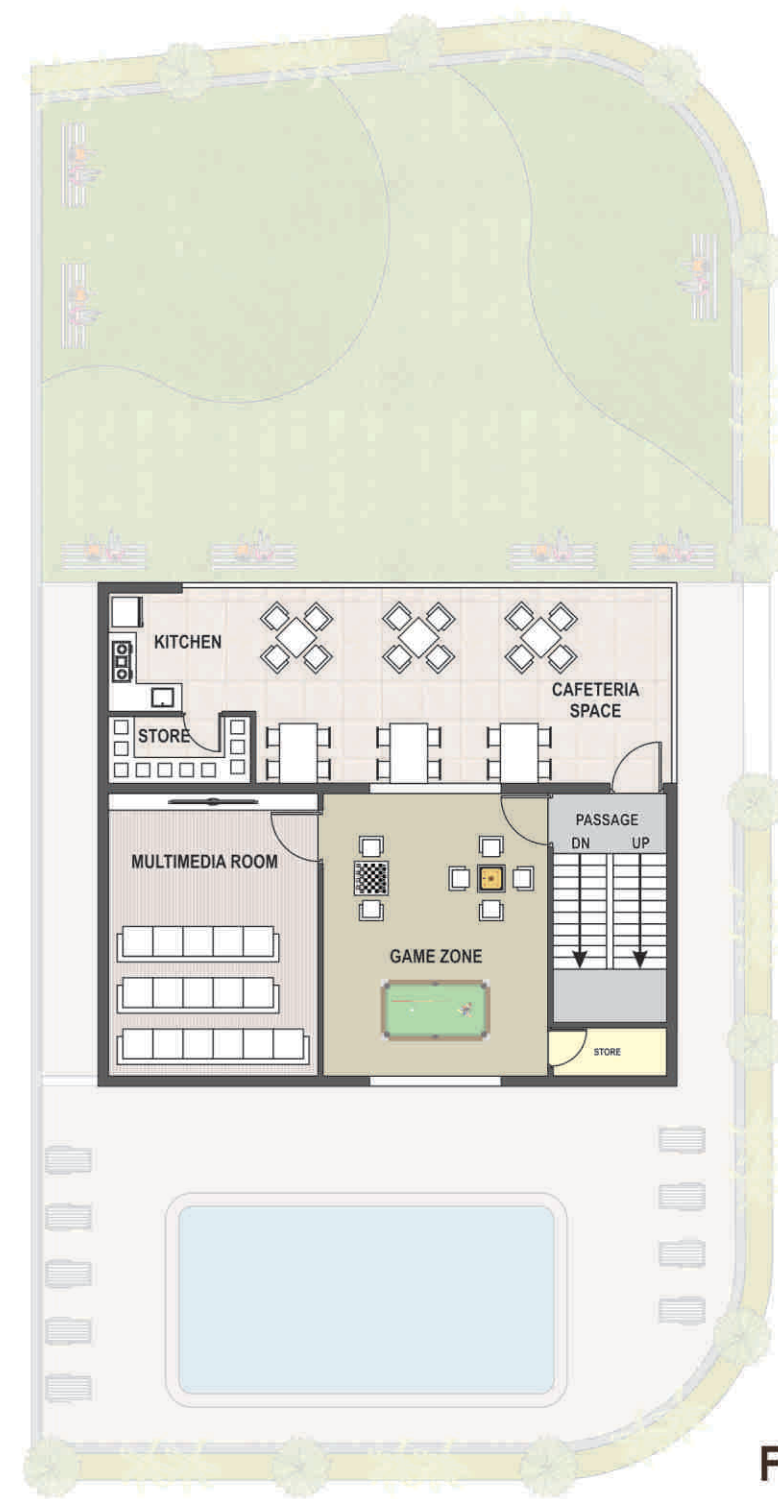
First Floor







Ground Floor

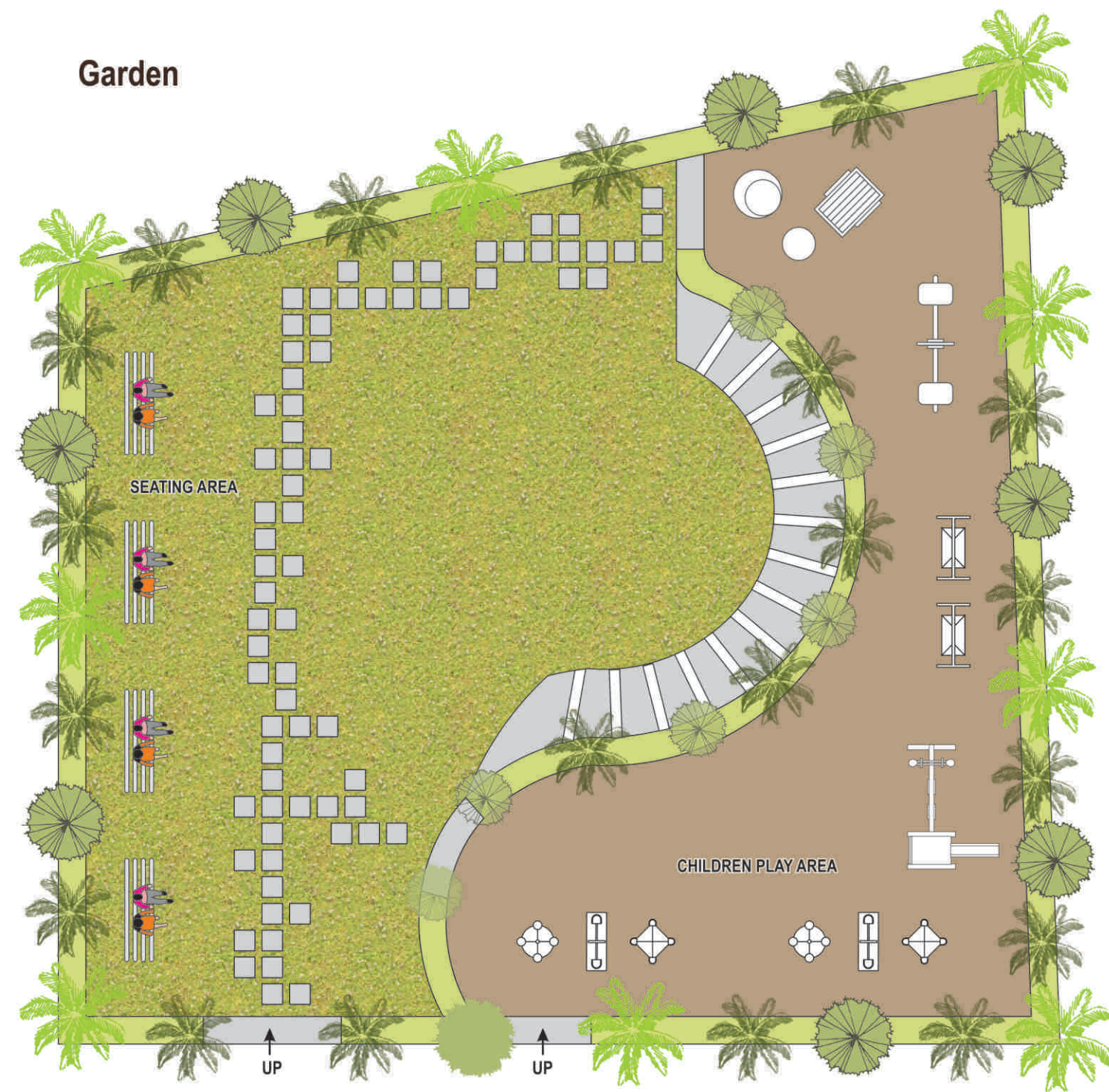


First Floor



57 HOMES

Garden



SPECIFICATIONS



FLOORING

Vitrified Tiles Flooring In Entire Area Ceramics Tiles In Bathroom / Toilet Area.



PLUMBING

Concealed PVC Piping hot water and UPVC piping for cold water Plumbing Good quality sanitary ware and C.P. Fittings.



KITCHEN

Granite Top Platform With S.S. Sink And Glazed Tile 2'.0" Dado Above Platform.



ELECTRIFICATION

Good Quality Concealed Copper Wiring With Standard Modular Switches.



DOOR / WINDOW

Main Door With Wooden Frame & Laminate. Internal Flush Doors. Powder Coated Aluminium Section Sliding Windows.



PAINT

Internal Putty finished wall with one coat primer. External One coat primer and two coat external paint.

Note :

(1) All Legal Document Charges, Registration charges, Legal charges, GEB charges, GST charges, Society maintenance charges shall be born by the purchaser. (2) Only Internal Changes Shall Be Allowed With Prior Permission & Shall Be Charge Extra. No External Changes Will Be Allowed. (3) The Right To Changing The Plans Fully Or Partly Or Specification Or Amenities Mentioned Are Reserved With The Developers. (4) The Developer Reserved All The Rights To Make Any Amendments In Construction As May Be Necessary. (5) All Plans, Specification Or Information In This Brochure Can Not Form Part Of An Offer Contract Or Agreement. (6) All Plans In This Brochure Are Not As Per Scale. (7) M.S. Safety Grill Should Be Designed By Developers And Shall Be Charges Extra.